



# MAESTRO

Cordless LED Headlight

## Optimal illumination for procedures and examinations

The Maestro LED headlight system (CRI 90+, 5700K) renders colors as close to natural light as possible, providing a higher level of color accuracy, allowing for a more accurate and detailed analysis of tissue.



CRI 70



CRI 80



CRI 90+

### True Color

Clear and natural color expression without distortion during procedures and examinations helps to identify critical details.

### Uniformity

A uniform light source increases visibility and improves the focus of the operation.

### Efficient Battery

It can be used for up to 4 hours with one battery, and a total of three batteries are provided, so it can respond to any procedure or surgery.

### Quick Launch and Replaceable Batteries

It lights up at the same time as the battery is replaced, enabling quick and accurate response.

### Features

High CRI True Color System  
Color Temperature 5700K  
Headlight Weight 31g

Working Distance	φ
350mm	82mm

### Accessories included

3 Rechargeable Batteries      Non-Curing Filter  
Battery Charger                      Cleaning cloth  
Universal Clip

	Level 1	Level 2	Level 3
Bright Intensity (lux)	5,000	10,000	15,000
Battery Life Time	4h	2h 20m	1h 20m

# SurgiMag

Loupes & LED Headlight



More Than Ergonomics, Beyond Expectations

[www.surgimag.co.kr](http://www.surgimag.co.kr)



# PENTAMAG

Ergonomic Deflection Loupes



# Galilean Loupes



## The ultimate optical technology

The combination of optics and ergonomics allows for clear, comfortable and efficient operation in a neutral position



conventional

SurgiMag



### Pain-free

Neutral Posture enable relieves neck and back pain



### Clarity

The lenses are multi-coated to reduce reflections and prevent chromatic aberration



### Optimized vision

The good balance between field of view and depth of field makes it easier for users

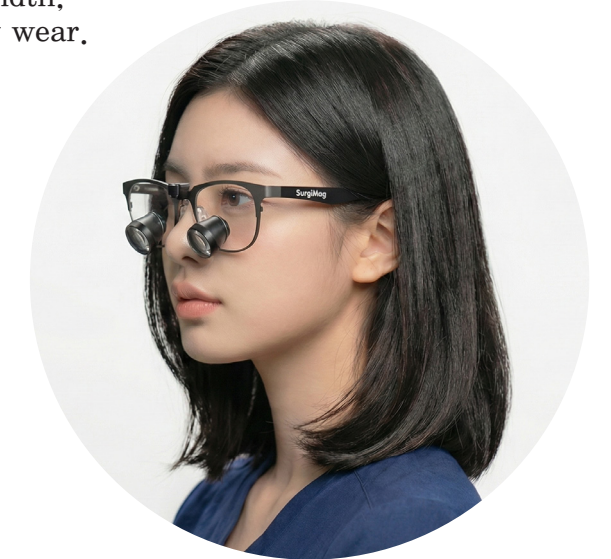


### Ultra light-weight

Ultra light-weight, so allowing you to work comfortably all day long

With a good balance of sharp images and depth of field and width, these lightweight loupes are comfortable and ideal for all-day wear.

- Lightweight, titanium frames.
- Maximum field of depth and width.
- Built-in prevention of chromatic aberration.
- Any prescription possible.
- Anti-reflective, protective coatings.
- Loupe angle up to 30° and custom working distance up to 60 cm.



2.5X

The wide field of view and deep depth of field make this magnifying loupe comfortable for first-time loupe users and suitable for hygienists and assistants.

- High resolution
- Large field of view
- Deep depth of field for easy focusing
- Easy magnification adaptation



3.0X

A great loupe for experienced loupe users. The higher magnification is beneficial for anyone looking to add a second pair of loupes.

## Magnification



3.0X



4.0X



5.0X



5.8X



7.2X

Magnification	Field of view	Depth of Field	Weight
3.0X	90mm	130mm	52g
4.0X	72mm	90mm	52g
5.0X	60mm	62mm	53g
5.8X	56mm	60mm	53g
7.2X	50mm	55mm	53g

	Magnification	W.D	FOV	DOF	Weight
Galilean Loupes	2.5X	350mm	90mm	130mm	37g
	3.0X	350mm	72mm	9mm	39g

Customization	Excellent vision	Ergonomics	Quality control
Surgimag TTL loupes are manufactured according to personal specifications, including pupillary distance, working distance and eyeglass prescription.	Clarity enable successful treatment and optimal prognosis management. To achieve superior optical performance, the lenses are anti-reflective coating to reduce reflections.	TTL loupes are designed with an optimal declination angle for your convenience. An appropriate declination angle relieves the burden on the operator's neck and leads to better treatment results.	We produce and assemble each loupe based on individual measurements. And the products are shipped out after going through a strict quality control process.